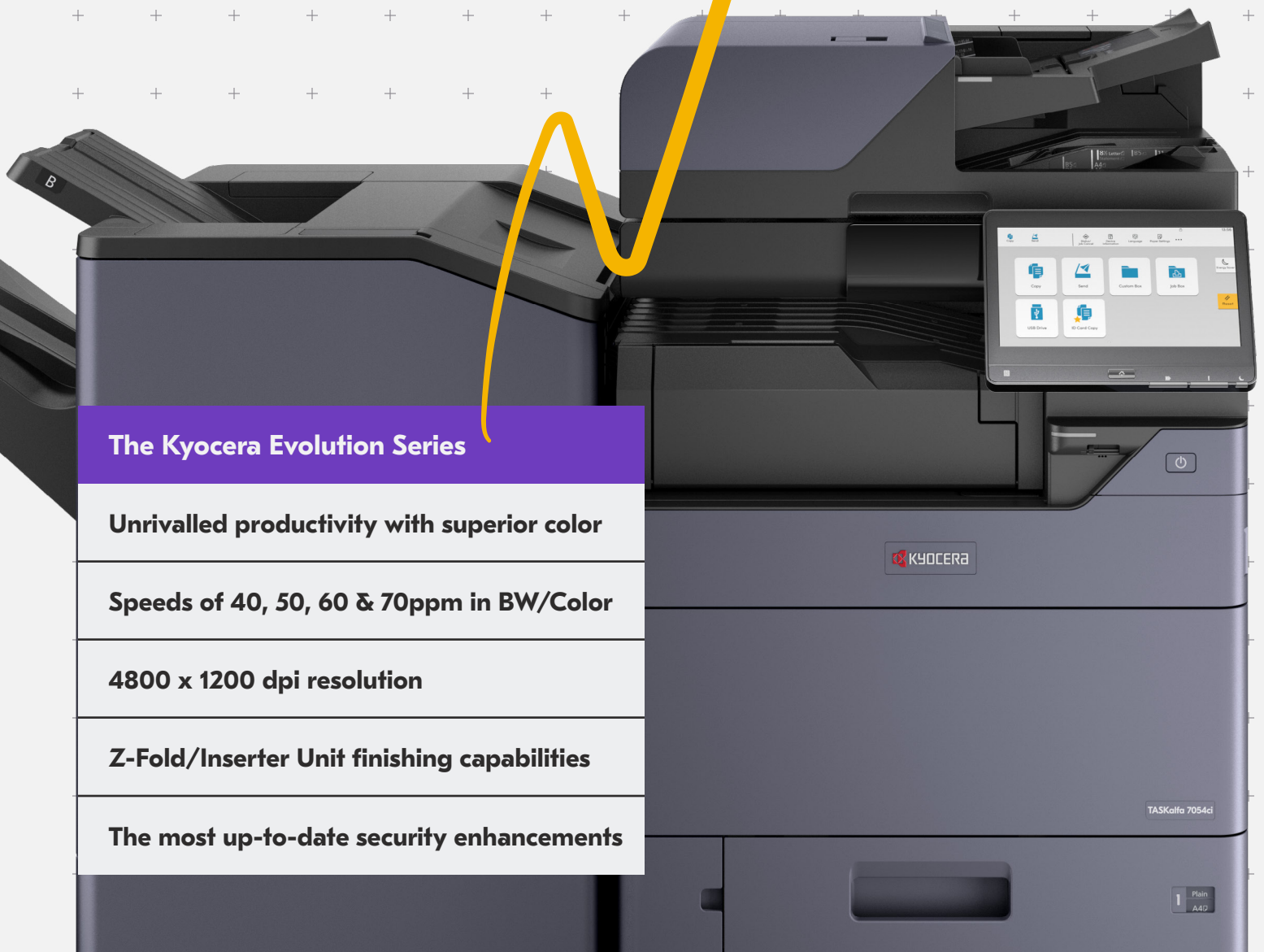




The Evolution Continues in Color

Magnify your message with more impact.



The Kyocera Evolution Series

Unrivalled productivity with superior color

Speeds of 40, 50, 60 & 70ppm in BW/Color

4800 x 1200 dpi resolution

Z-Fold/Inserter Unit finishing capabilities

The most up-to-date security enhancements



TASKalfa 7054ci

1 Plain
A4D

Make Change Your Edge

The Kyocera Evolution Series was created for a new landscape of work. It is a range of robust, **versatile platforms that have been built to last**. Combining cutting-edge technology and Kyocera's expertise, these intuitive, user-friendly **color devices** will drive your productivity to new levels.

Our new color systems!



TASKalfa 4054ci

TASKalfa 5054ci

TASKalfa 6054ci

TASKalfa 7054ci



Print Speeds

40 ppm

50 ppm

60 ppm

70 ppm



Scan Speeds

up to 274 ipm

up to 274 ipm

up to 274 ipm

up to 274 ipm



Document Processor

up to 320 sheets

up to 320 sheets

up to 320 sheets

up to 320 sheets



Toner Capacity*
(B&W/color)

30,000/20,000

30,000/20,000

40,000/24,000

40,000/24,000



Enhanced Security Features

Encrypted data with authentication technology and automatic security certification checks. Supports FIPS 140-2 and HCD-PP certification.

*Based on 5% coverage



Print in Flying Colors

Dive into a world of exquisite image quality. The devices in the Kyocera Evolution Series offer superb definition, both in monochrome and full color.

Not only will time-pressured users benefit from the **Super Resolution** feature, that improves the quality of images at the touch of a button, but they can also opt for **High-Impact** and **Vibrant Printing** (4800 x 1200 dpi resolution).

Alongside dramatic color, crisp black & white, and detailed graphics printing, these devices offer top-of-the-range scanning, input, and professional finishing options. In short, the Kyocera Evolution Series goes beyond the requirements of even the most demanding workplace.

For outstanding image reproduction, look no further.

New Heights of Productivity

Now more than ever, companies are seeking devices that are more agile and robust, and ever-smarter ways of working. The Kyocera Evolution Series empowers companies to maximize productivity like never before.

Re-energize the Way You Work



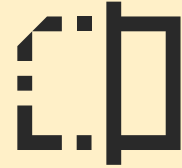
High Performance

Fast print and scan speeds for maximum efficiency.



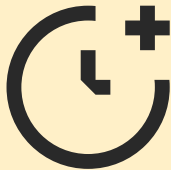
Paper Capacity

Less time filling paper trays means more time for quality work.



Digitization

Transform your workflows faster while pivoting to a paperless workspace.



Durability

Long-lasting toners ensure professional quality that lasts.



Proven Quality

Our devices have earned industry recognition for their reliability.



Optimal Security

Enjoy some of the most advanced security technology on the market today.

The Kyocera Evolution Series takes a holistic approach to workflows in the **modern workplace.**

By addressing and tackling pains at each stage of the document lifecycle, we have delivered a range of devices for today's businesses, TASKalfa devices that help turn past weaknesses and blind spots into **new value-adding opportunities for your organization.**

We have taken the complex and made it simple.

As it should be.

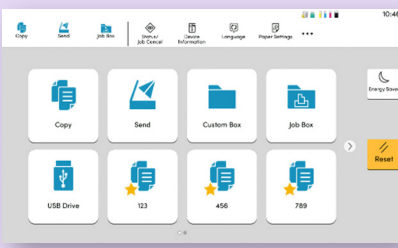
An Effortless User Experience

Over-complicated printer controls drain valuable time and can impact your overall productivity. The Kyocera Evolution Series puts an end to that, with a user interface that has been totally redesigned to **minimize confusion** and **maximize your capabilities**, for printing that is easy and intuitive.

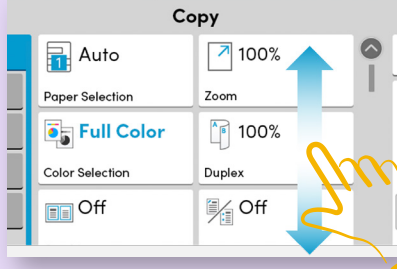


Meet the New User Interface

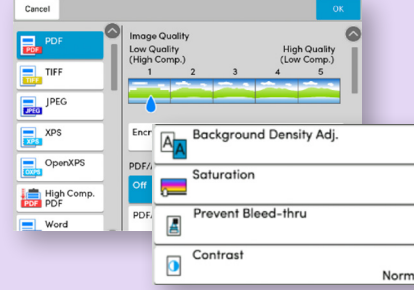
With standard colors and easy to understand icons, carrying out tasks at the printer has never been simpler.



Simple
Standardized icons and graphics make navigation intuitive and easy.



Intuitive
Emphasize important information and use gestures to select target items.



Efficient
Work quicker with fewer steps, along with quick-switch settings.

Higher Risks Mean Better Solutions

Security is a greater concern than ever before, with more large-scale cyberattacks hitting the headlines every day. Businesses must preemptively prepare for potential risks by equipping themselves with solutions that ensure data and networks are constantly protected.

The Kyocera Evolution Series comes with a whole range of new security enhancements:



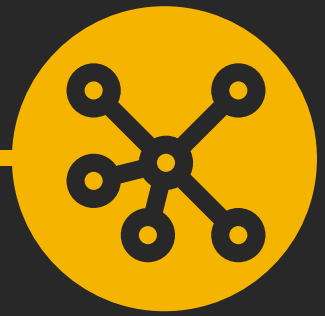
Certificates

Devices keep themselves up to date with latest security certificates, and use encrypted communications to validate their certificates. (SCEP & OCSP/CRL).



Encryption

Protect emails with authentication, digital signatures and encryption. A faster way to keep data secure in your network (S/MIME & TLS version 1.3).



Device Management

You will have the ability to log security events and monitor for malware, data leakage and other security breaches. (SIEM).

Kyocera's up-to-date security compliance shows our commitment to the highest standards of information security management.



Finish in Style

With the Kyocera Evolution Series, **it's your documents your way.**

Today's workspaces demand greater agility and media flexibility, and Kyocera has risen to the challenge with brand-new finishing capabilities for 60/70ppm devices.



ZF-7100 Z-Fold Option

This functionality enables you to add "z-folded" sheets into your documents. This includes diagrams, charts and other larger sheets that need to be folded into a 8.5" x 11" sized booklets. This can also be particularly useful for standalone applications when producing invoices, marketing flyers and brochures.

IS-7100 Inserter Unit Option

This presence of two trays enables users to feed pre-printed pages as potential front or back covers or sheet inserts. The Inserter Unit avoids the need for pre-printed sheets to go through the high-temperature fusing process at the MFP, thus ensuring that the pre-printed sheets won't get destroyed or melted.

Staple Finishing Option

The Kyocera Evolution Series also boasts 4,000 sheet staple finisher options that support 65 and 100 sheet stapling and 2/3 hole-punching for clean, professional looking output so that more jobs can be kept in-house even in the most demanding of work environments.



Evolving Our Future

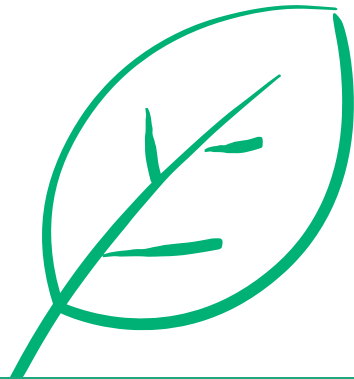
Keep your productivity high and sustainability higher.

Kyocera was built upon the principle of **doing the right thing as a human being**. In everything we do, we try to balance ecology and economy, and seek to make all of our growth sustainable.

This means that you can rest easy knowing that, while you're maximizing productivity and efficiency within your business, you're also reducing your environmental impact.

The Kyocera Evolution Series makes it possible to combine eco-friendly printing with greener and more intelligent digital processes, so that your daily work has a reduced carbon footprint. Your growth doesn't have to cost the environment.

**We do more than just talk about sustainability.
Our actions speak for us.**



New Toner Design Helps
Reduce Energy Consumption



Energy-saving
Sleep Mode



Increased
Eco-credentials



Increased
Productivity



Your Pains. Our Solutions.

With the Kyocera Evolution Series you get:



User-friendly Interface

Tablet-like functionality makes life easy. No more frustration at the printer!



Fast Print and Scan Speeds

Get the documents you want when you need them and watch your productivity soar.



Smart and Scalable Solutions

Get your team working as one with solutions that help workflows run smoothly and efficiently.



Devices You Can Rely On

Kyocera devices are built to last the test of time. Get ready to say goodbye to costly downtime!



Optimal Security

With in-depth security capabilities you can rest assured that your confidential data is safe with Kyocera.



Kyocera Document Solutions has championed innovative technology since 1934. We enable our customers to turn information into knowledge, excel at learning and surpass others. With professional expertise and a culture of empathetic partnership, we help organizations put knowledge to work to drive change.



 770.434.3050 • www.reproproducts.com

