



Xerox Nuvera® 100/120/144/157 EA Production System

Put Your Best Image Forward

Image Quality to Impress Your Audiences

You can expect exceptional output and a healthy return on your investment for every application you create with the Xerox Nuvera® 100/120/144/157 EA Production System. It offers all the capabilities you need to wrap up every job professionally: outstanding monochrome imaging quality, four highly efficient speeds (100, 120, 144 and 157 impressions per minute), power, productivity, modularity and a wide range of finishing options.



1

Excellent image rendition with a wide range of gray levels

2

Even lines with smooth, uniform curves

3

Outstanding detail

4

Dark, uniform blacks

5

Sharp, highly detailed text rendering

6

Fine lines and tints

Building Your Business in Versatile Black and White

There is no substitute for great images—it's the first thing your audience will notice, and it makes a lasting impression. By combining progressive monochrome technology with customer focused-engineering, the Xerox Nuvera EA provides image quality that challenges offset.

Innovative EA toner

Fine particle EA (Emulsion Aggregation) Toner is a key factor in this system's high image quality:

- It produces fine lines with maximum detailing, sharp text, halftones and deep solid blacks
- Printed pages have a smooth, offset-like matte finish
- Fine scatter typically associated with monochrome digital printing is transparent, so even the most detailed line work is razor sharp—images are crisp and clear
- High yields mean longer production print runs are possible without operator attention or intervention to change toner/developer
- Friendly to the environment, EA Toner achieves better distribution of smaller particles for higher quality with less toner per page

More unattended run time saves you time

Toner and developer are uniquely combined in a single container, offering you key benefits:

- Replace less often—average yield is up to 210,000 prints per cartridge
- Maximum unattended run time—add optional second toner container system
- More uptime—change-while-run cartridge replacement

You'll get excellent resolution in a clean environment

The Xerox Nuvera EA offers you the highest monochrome resolution of any digital production printing system currently available.

- RIPs at 1200 x 1200 dots per inch (dpi)
- 4,800 x 600 dpi printing
- Halftone screens available at 85, 106, 125, 134 and 156 lines per inch (lpi)—ensure smooth grays, more realistic pictures and sharper details
- Unique Cyclone Cleaning Technology automatically removes stray toner, paper dust and particles, creating a pristine environment for consistently sharp text, images and photos



Xerox Nuvera® 157 EA Production System with Xerox® Production Stacker

TELER Registration Keeps Sheets in Place

You'll achieve superior image-to-sheet (± 0.65 mm) and front-to-back (± 0.65 mm) registration, which meets or exceeds general publishing standards. Our Translating Electronic Registration (TELER) precisely controls the position of each sheet of paper according to the image on the photoreceptor, and the speed of each sheet traveling through the paper path. In this way, it ensures each sheet is in exactly the right position to receive the latent image.

Media to Match Your Applications

You can choose from an expansive range of substrates to match your application requirements and build your application capabilities, even oversized coated papers. Expect consistently high image quality on popular coated and uncoated stocks, including bond, bristol, cover, index, offset, recycled, transparencies, carbonless, labels, tabs and pre-printed forms.

Optimal Sheet Flatness Anywhere You Are

Optimally flat sheets, delivered by our slim, automated Sheet Enhancement Module (SEM) yield better image quality and smoother print runs, regardless of your production print environment.

- Stack quality is optimized, ensuring high performance from your downstream finishing alternatives

- Your operators can fine-tune automated controls or access a "manual override" function to overcompensate when fighting heat and humidity in your print production environment; this ensures you achieve optimal sheet flatness
- Works in conjunction with the stock library to automatically adjust to the characteristics of the paper you are running

Reliably Productive For You

We offer these options to ensure you enjoy maximum uptime from your Xerox Nuvera® 100/120/144/157 EA.

Direct Communication to Service*

These are intelligent systems that can connect to your network and report service issues as they happen. This means that your Customer Service Engineer arrives prepared with the appropriate parts, reducing delays in production and maximizing your uptime.

Xerox Nuvera Productivity Plus (XPP) Integrated Maintenance Program

Xerox Nuvera Productivity Plus (XPP) is an innovative, customer-focused maintenance program that makes it easy for you to diagnose and replace routine service items. A series of wizards provide step-by-step instructions to replace basic parts. This enables you to increase your productivity and print volumes, while effectively managing print quality—all while avoiding service intervention across every shift. Two program

*Subject to local availability

"With each improvement made to the Xerox Nuvera—from feeders to dual print engines to the next generation of stackers—the speed and quality just get better and better. Nothing can compete with it."

– Kenny Liszewski
Operations Manager
Matrix Imaging Solutions

options are available—XPP Basic and XPP Advanced. You can choose which is best for you based on the level of participation that works for your business.

Xerox® prInteract® Remote Service Offerings

Remote service features including Automated Remote Monitoring and On Demand Machine Data Transfer available through a secure, online connection between Xerox engineering staff and your Xerox Nuvera EA. Using this connection, we can quickly respond to your service needs, enabling us to:

- Easily access equipment data to provide real-time recommendations and help optimize overall performance
- Automatically generate up-to-the-day accurate meter reads with MeterAssistant®

Options to Make it Yours

Choose from an expansive array of options to create the Xerox Nuvera® 100/120/144/157 EA Production System that reflects your business, your environment, your customers. From feeding to finishing, it's a modular system that's all about you.

1

Scanning Options

You can expect increased productivity in your business because of the Xerox Nuvera EA's optional integrated onboard scanner. It offers excellent image quality (600 x 600 dpi) and features dual scan heads. The relatively small size of the full width scanner array in each head makes it possible to employ dual heads.

- Productivity—120 images per minute
- Image Quality—600 x 600 dpi image capture
- Reliability—Originals only pass through the document handler once, reducing wear and jams

2

Feeding Options

The Xerox Nuvera EA offers you excellent paper handling.

- Paper trays rely on air shuttle feed technology. Processor-controlled, using information from the stock library, this technology ensures reliable feeding and supports heavier media and coated paper; air knives separate paper to avoid misfeeds
- Tiltatron technology supports production of DocuCard® applications. The system's innate intelligence tells rollers when to press harder, when the air knives should add thrust, and more, to deliver a highly intuitive and productive paper-handling process
- You can reload paper without job interruption to significantly increase continuous productivity

Choose from the following Sheet-feed modules. You can use them independently, together or in combinations that suit your workflow:

Standard Sheet-feed Module

- Four trays, 5,800 sheet capacity
- Do more high-value applications with more unattended run time at point of need and produce high-impact jobs on demand

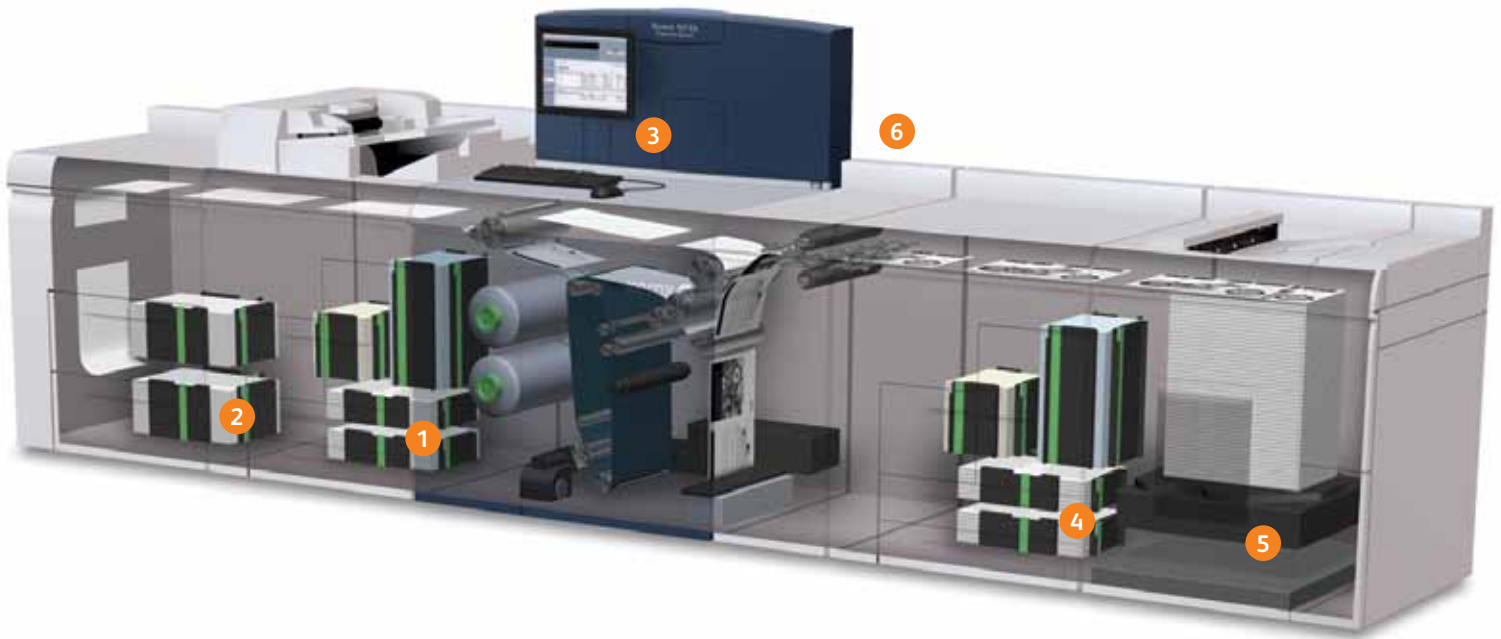
High Capacity Sheet-feed Module

- Two trays, 3,200 sheet capacity
- Ideal alternative if you want to leverage oversize stocks up to 12.6" x 19.3" (320 mm x 491 mm)

Note: You can add up to three of the above modules in any combination to your configuration, enabling up to an 11,600 sheet capacity with as many as eight pick points.

Lasermix Roll Systems SheetFeeder NV-R Roll Feeder with Optional Grain Rotator

- Attaches to a standard Sheet-feed Module
- Can provide paper cost savings, reduce operator intervention and add up to five hours of continuous feed in a production print environment while still providing access to the paper trays for multiple pick points



3 Imaging and Processing Options

The powerful Xerox® FreeFlow® Print Server is integrated into the Xerox Nuvera® 100/120/144/157 EA Production System to make the most of your space. All variations of the system feature a standard print engine. We offer you four production speeds: 100, 120, 144 or 157 pages per minute (ppm). The FreeFlow Print Server is available in the standard or professional edition.

Standard Edition

- Basic workflow capabilities including one queue and simple stock handling
- An easy-to-use Graphical User Interface (GUI). It allows your operators to easily manage multiple print jobs from multiple queues; from the interface, you can hold, interrupt, proof, reprogram and forward jobs to maximize print engine productivity
- A 125 lpi line screen

Professional Edition

The Professional Edition is achieved when you add any of the following options to the standard edition FreeFlow Print Server to accommodate your workflow and enable greater connectivity to mainframe applications:

- An expansive range of data streams supported in their native languages: Adobe PostScript, PCL, PDF, TIFF, ASCII, LCDS and IPDS and variable data formats such as FreeFlow VI Interpreter (VIPP®) and PPML; no converter or transformer required

- A Productivity Pack supporting production features such as multiple queues and a robust 250 stock library
- Image Quality Pack providing expanded line screens from 85 lpi to 156 lpi

4 Inserting Options

You can add value and impact to your output by inserting color covers, inserts or specialty media with our Post-print Paper Insertion Modules:

Insertion Module

- Four trays, 5,800 sheet capacity

High Capacity Insertion Module

- Two trays, 3,200 oversized sheets

Note: This option can provide an overall system total capacity of 23,200 sheets (three 5,800 Sheet-feed Modules and one 4-tray Sheet-feed Module at 5,800 sheets).

5 Finishing Options

Choose from a wide variety of in-line and off-line professional finishing options, both from us and from our industry-leading third-party suppliers. These options are designed to accommodate your requirements:

- Mid to full production
- Complex documents
- Challenging environments

6 Xerox Nuvera Flexible Speed Program—Ramp Up to Meet Your Workload

Xerox Nuvera Flexible Speed Program gives you the option to temporarily upgrade your Xerox Nuvera EA and boost the system's speed to meet your workload. For example, convert your Xerox Nuvera 100 EA Production System to a Xerox Nuvera 120 EA for 30, 60 or 90 days. At the end of that time, you can opt to renew the upgrade for another 30, 60 or 90 days or allow your system to return to its original capacity.

If you have	Upgrade to
Xerox Nuvera 100 EA Production System	Xerox Nuvera 120 EA Production System or Xerox Nuvera 144 EA Production System
Xerox Nuvera 120 EA Production System	Xerox Nuvera 144 EA Production System

Finishing Your Jobs With Finesse

Finishing can make or break your applications. The Xerox Nuvera® 100/120/144/157 EA Production System offers you many ways to finish your output and create high-quality, high-impact applications right at your point of need.



Xerox® IntegratedPLUS Finishing Solution for Booklets

Now prepress setup and finishing setup can be automated. You get the best of both finishing worlds—the convenience of in-line with the flexibility of off-line, plus unsurpassed labor savings. The Xerox® IntegratedPLUS Finishing Solution for Booklets enabled with the Xerox® exclusive, C.P. Bourg Dual-Mode Sheet Feeder allows selected finishing devices to be set up automatically, through JDF instructions, whether or not they are attached to a specific printer.

For Example, You Can Choose From the Following:

Multifunction Finisher Professional*

- For mid-production environments
- Capabilities include stacking, stapling, folding and booklet making

Multifunction Finisher Pro Plus*

Offers all the benefits of the Multifunction Finisher Professional, plus:

- 2/4 (standard) or 2/3 (optional) hole punch
- 200 sheet color cover insertion to boost document value at a fraction of the cost of full color

Note: The Sheet Enhancement Module is not compatible with or included in configurations featuring the Multifunction Finisher Professional or the Multifunction Finisher Pro Plus. These specific finisher configurations accommodate only uncoated stock.

*Available on Xerox Nuvera 100/120 EA Production System

Basic Finisher Module

- For production print environments
- Capabilities include in-line stapling and stacking up to 3,000 sheets

Basic Finisher Module Plus

Offers all of the benefits of the Basic Finisher Module, plus:

- Convenient side exit lets you integrate basic in-line finishing with other finishing equipment
- Together with the Basic Finisher Module, enables standalone dual finishers that stack up to 6,000 sheets and delivers unload-while-run finishing capability, ensuring greater throughput without interruption
- Can be used in tandem, enabling you to integrate two Basic Finisher Modules Plus with other in-line finishing alternatives for even greater capacity

Basic Finisher Module—Direct Connect (BFM-DC)

Offers all of the benefits of, and works seamlessly with, the Basic Finisher Module, along with the added benefit of Document Finishing Architecture (DFA), which is your gateway to alternative in-line finishing. The BFM-DC provides direct connection to center-registered finishing devices such as the Xerox® Tape Binder, Watkiss PowerSquare 200, CEM DocuConverter and more.

Balance of Finishing Options

Xerox exclusive, C.P. Bourg Dual-Mode Sheet Feeder

- Acts as a bypass sending sheets to downstream third-party finishers. Users can manually feed stacks from other printers into downstream third-party finishers in the “off-line mode” while Xerox Nuvera® prints to its stacker or top tray.
- Saves time and enables you to produce more jobs through automated setup of files and automated setup of in-line or off-line finishers with the Xerox® IntegratedPLUS Finishing Solution for Booklets.
- Adds integrity by allowing printed stacks to easily be moved to the finisher without splitting the stack.
- In off-line mode, the attached finisher can run at up to 15,000 sheets/hour.
- Optimizes finishing investments

Xerox® Production Stacker

- Unload while run—on a single unit
- Waist height removal of finished stacks
- Configure up to three stackers in tandem—providing almost 60–85 minutes of unattended print and stack time



Multifunction Finisher Pro Plus



Basic Finisher Module



Basic Finisher Module Plus



Basic Finisher Module – Direct Connect



C.P. Bourg BSFx Dual-Mode Sheet Feeder



GBC eBinder II



Xerox® Tape Binder



GBC FusionPunch II with Offset Stacker



C.P. Bourg BDFNx Booklet Maker with Square Edge



Xerox® Production Stacker



Watkiss PowerSquare 200



Xerox® DB120-D Document Binder



Plockmatic Pro 30 Booklet Maker
(Available on 100/120/144/157 only)



LaserMate LM-15



Xerox® Book Factory



Duplo DBM-5001

Productivity: Doing more for you in less time.

Productivity is essential to achieving a great return on your equipment investments. The Xerox Nuvera® 100/120/144/157 EA Production System, driven by the Xerox® FreeFlow® Print Server, offers you excellent imaging plus the maximum productivity you need. You'll enjoy excellent job control with this system. In addition, it offers the flexibility and freedom to work within a number of network environments to produce business-building applications on a variety of equipment.

How the FreeFlow Print Server Benefits Your Business

The FreeFlow Print Server enhances your business's productivity, effectiveness and, ultimately, its profitability in vital ways.

For example:

- Receive/RIP/print jobs concurrently to efficiently produce hundreds of small jobs or transactional data jobs with thousands of customer database entries
- Print and reprint on-demand with simple controls to preview, edit, impose, proof, interrupt, reprogram and forward jobs
- Advanced security controls allow individual or group settings
- Submit jobs from just about anywhere, including desktop/commercial publishing workflows; submit data from mainframe systems, and client/server architectures, XML/database/ASCII input or simply from DVDs, CDs and even portable USB devices.

- Submit print-ready jobs into pre-set Hot Folders for easy, automatic printing
- Automate job ticketing and customize job workflows through up to 250 programmable queues with minimal operator intervention
- Use the stock library to promote efficient use of media
- Save on training costs and increase uptime—familiar interface and workflow lends itself to “train once” paradigm
- Ideal for both publishing (high imaging quality and speed) and transactional environments (readily accommodates multiple data streams)

A Smooth Workflow: Easier for Your Business, Easier For You

The Xerox® FreeFlow Digital Workflow Collection is designed to take you easily through every stage of managing your jobs, from creation to final output. Integrating with the Xerox Nuvera EA, this suite of optional solutions enables you to enhance, automate and simplify your existing workflow, increasing productivity and making the most of your investment.

Keeping You Stocked and Running—Automatically

With the Automatic Supplies Replenishment option on your Xerox Nuvera EA, the print engine will automatically call in your supplies order for you, as you need it. Available as part of your service contract, our “smarter” Xerox Nuvera EA system has the intelligence to calculate when a certain number of pixels printed has been reached, and then sends a signal via your network to Xerox to order more crucial replacement items. We make sure you have on hand what you need to keep running, increasing your productivity and helping you focus on running your business.



Xerox Nuvera® 157 EA Production System with Xerox® Production Stacker and Watkiss PowerSquare 200

FreeFlow® option	Function	What it does for you
FreeFlow Web Services	24/7 Web portal connects your print shop to your customers	From anywhere, your customers can submit new jobs securely and reorder existing ones over the Internet (or an intranet)
FreeFlow Process Manager®	Automates your print shop's common pre-press steps	In addition to a touchless workflow, you can process more jobs faster, for less, and maximize your printers
FreeFlow Output Manager®	Automates load balancing and job scheduling	You can automate your application production and enhance efficiency
FreeFlow Makeready®	Simplifies prepress operations to help make short work out of complex jobs	Jobs can be completed more accurately and more quickly, freeing up your operators to process more work
FreeFlow Variable Information Suite	A suite of tools to help you design, create and manage variable data print jobs more quickly and profitably	Add the power of personalization without compromising productivity. On their own or as an integrated solution, VI Suite tools can help you optimize production workflows and maximize your bottom line
FreeFlow Express to Print	Intuitive visual interface simplifies job ticketing and pre-press functions while template-based automation streamlines job set-up	Cost-effectively increase your productivity, even on cumbersome jobs like business cards, books and manuals

Configuration: It's all about providing what you need.

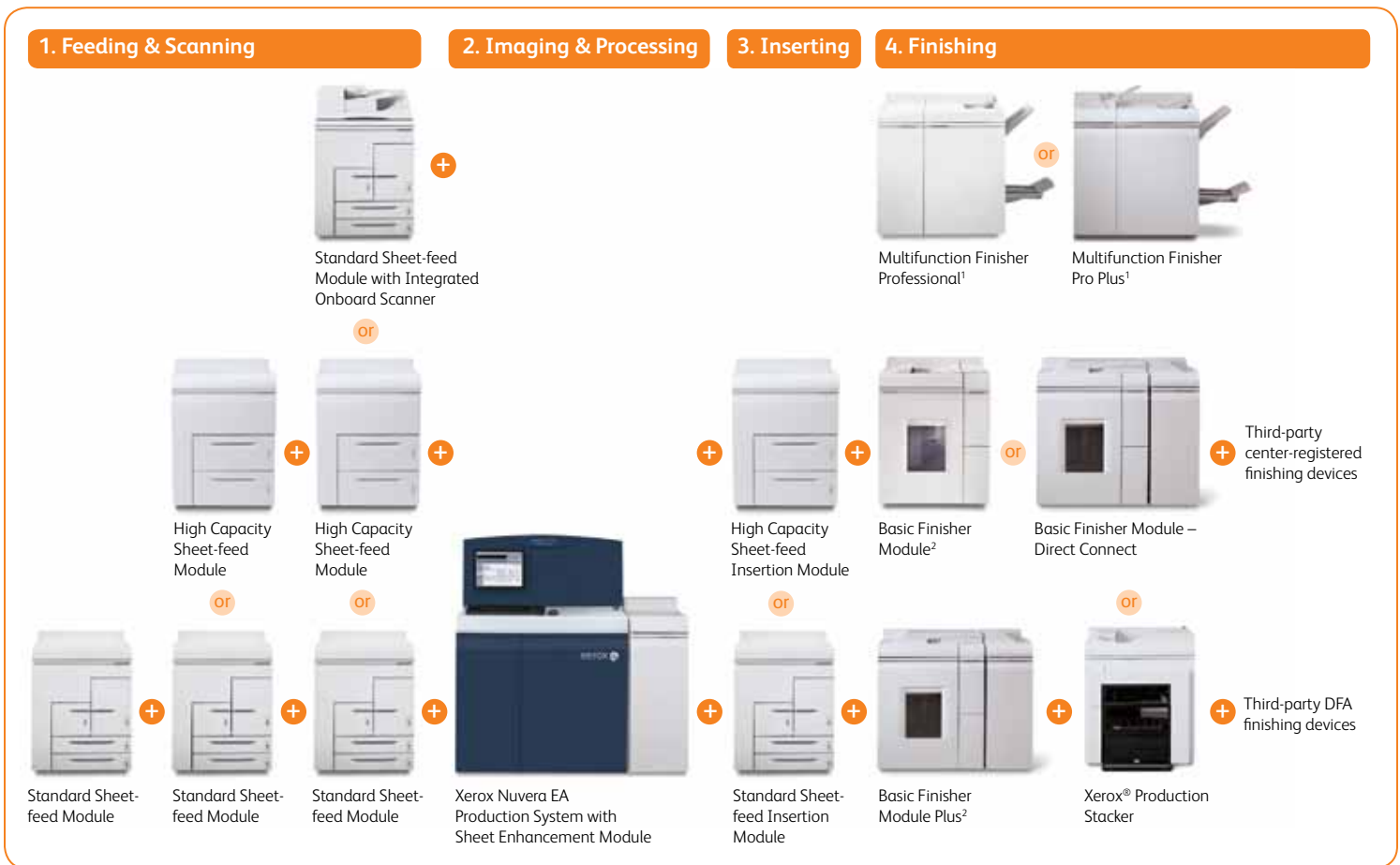
With the Xerox Nuvera® 100/120/144/157 EA Production System, you can customize our product to fit your business. Since it's flexible, scalable and customizable, the possibilities are many. For example, you might choose the Xerox Nuvera EA with Xerox® FreeFlow® Print Server Standard, and then add an integrated onboard scanner and the Multifunction Finisher Pro Plus.

Or you might start with Xerox Nuvera EA with FreeFlow Print Server Professional and add:

- An integrated scanner; enhanced line screens; post-insertion, in-line stacking and stapling

- Enhanced line screens; post-insertion, in-line stacking and stapling and the Xerox® DB120-D Document Binder

- Enhanced line screens; post-insertion, dual Xerox® Production Stackers, C.P. Bourg BDFNx Booklet Maker with Square Edge



¹The Sheet Enhancement Module is not compatible or included in configurations featuring the Multifunction Finisher Professional or the Multifunction Finisher Pro Plus.

²Available "Dual" finishing combinations (not shown):
 (1) Basic Finisher Module Plus and (1) Basic Finisher Module;
 (2) Basic Finisher Modules Plus and (1) Xerox® Production Stacker;
 (1) Basic Finisher Module Plus and (1) Basic Finisher Module-Direct Connect with other in-line center-registered finishing solutions;
 (2) Xerox® Production Stackers and (1) Basic Finisher Module Plus;
 (1) Basic Finisher Module Plus and (1) Xerox® Production Stacker.

Every application opportunity is your opportunity.

From transactional and transactional promotional (TransPromo) applications to publishing applications to books and manuals and more, the Xerox Nuvera® 100/120/144/157 EA Production System makes it easy for you to add value and deliver results for your customers. You'll have limitless opportunities to develop and create new and enhanced applications that will expand your business. It offers the high image quality, speed and productivity needed to make the most of every application.

Achieve Better Response Rates for Your Transactional Pieces

Because the Xerox Nuvera EA simultaneously accommodates a wide range of common data streams natively, it can easily produce all of your transactional applications. And you can increase response rates for those applications by adding high-quality data-driven graphics to your customers' bills and statements.

The Xerox Nuvera EA lets you turn your standard transactional applications into cost-effective sales tools—it's easy to add personalized graphics, promotional offers and marketing content. And you'll save on print and postal costs.

Quick and High-quality Publishing Applications

The Xerox Nuvera EA makes quick work of publishing applications while delivering the high image quality you and your customers demand. Whether it's a communication to an audience of thousands or a personalized newsletter, you can produce your applications with speed and efficiency—and exceed your customers' expectations with exceptional image quality. For example, you can:

- Personalize text and graphic content to capture attention and add value to your communications
- Deliver high-quality output on media that gives your customers a competitive advantage in their markets—the Xerox Nuvera EA lets you choose from an expansive range of substrates so you can be creative

You'll Find the Book Opportunity Easy to Read

With the Xerox Nuvera EA, you are well prepared to succeed when printing books and manuals. We offer the right business model, the right workflow tools and experience, and the right technology to help ensure your success in the growing digital book printing business. An excellent complement to offset, this system enables you to deliver the look and feel that authors, publishers and readers demand with high imaging quality and an offset-like matte finish.

For All That Your Business Demands

From image quality to power to productivity to finishing,
the Xerox Nuvera® 100/120/144/157 EA Production System delivers the
business-building capabilities you need to succeed. Let us help you
create a system that meets all of your requirements and more.

