



CAD Software ♦ Imaging Solutions ♦ Document Management



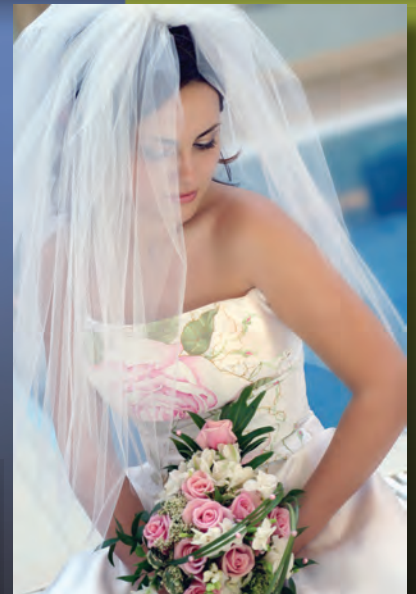
imagePROGRAF Full-Line Brochure

Whatever your needs, Canon has the large-format solution.

Canon



technical documents
general office use



photography
fine art
graphic design

production printing
signage



Canon's family of imagePROGRAF large-format printing solutions

Canon Innovation in
Everything We Do

As a worldwide innovation leader for over 70 years, Canon has a legacy of cultivating breakthrough technologies. Our expertise in the areas of science, engineering, and manufacturing has produced world-leading imaging solutions and consistent placement among the top U.S. patent holders of the decade.

This corporate culture of technological innovation drives us to produce an ever-expanding range of large-format printing solutions, each one carefully crafted to address specific customer needs in each market segment we serve. As a result, the imagePROGRAF family has grown into a broad array of solutions that offer our customers more features, functions, and options than ever before.

Today, the line of imagePROGRAF large-format printers is at the forefront of the industry. Specialized customer solutions and applications range from fine art and photography to production printing, and from technical documents to general purpose poster making.

Inside every imagePROGRAF large-format printing system are proprietary Canon technologies configured to meet the unique needs of our customers, with each seamlessly integrated to enhance performance and optimize results.

Some of the leading Canon technologies behind the success and popularity of imagePROGRAF large-format printers include:

- Canon's high-speed, super-efficient L-COA processor
- Large 1.07", ultra-high-density print-heads manufactured with Canon's proprietary FINE (Full-photolithography Ink-jet Nozzle Engineering) technology
- A calibration function for Graphic Arts and production printers
- Durable, vibrant LUCIA® pigment inks for 12-color and 8-color printing systems
- A breakthrough Reactive Ink technology that improves image clarity and durability for the 5-color printers
- Easy-to-use software and workflow solutions designed to address unique large-format printing requirements and expand our customers' capabilities

Read on for information about the complete line-up of Canon imagePROGRAF large-format printing systems.



12-Color: Graphic Arts Printers

Built for professionals who appreciate the difference between ordinary and extraordinary print quality, these imagePROGRAF large-format printers deliver a unique combination of ultra-high-quality imaging, maximum productivity, and a 12-color LUCIA ink set capable of producing an extraordinary range of vibrant colors, subtle hues, and deep shadows.

PHOTOGRAPHERS AND STUDIOS

- Portrait-quality prints, especially for multicopy projects where consistency is essential
- Photo enlargements that retain image sharpness, color, and clarity
- Commercial/corporate photography for display

GICLÉE AND FINE ART REPRODUCTION

- Precise replication of paintings and other fine art originals
- Reproductions that require exceptional color accuracy and image resolution

MUSEUM-QUALITY DISPLAYS

- Ultra-high-quality output with durable pigment inks means prints will look great for a long time
- Produce lobby art, atrium banners, exhibit graphics, indoor murals, and more

PROFESSIONAL PRINT MAKERS

- Proofing, including layout proofs, imposition press proofs, and contract proofs
- High-end color prints for presentation comps of packaging and collateral materials
- Specialty applications requiring high-quality image reproduction

Canon Innovations Inside

ARCHIVAL LUCIA INKS

Canon's specially formulated LUCIA pigment inks have outstanding archival characteristics. By coating each pigment particle with a special polymer compound, Canon has increased the ink's resistance to fading and scratching. These specially formulated inks also improve image quality by reducing graininess and bronzing—so prints look great from every angle.

ENGINEERED FOR EXCELLENCE

The high-speed L-COA controller channels output through two one-inch print-heads, each with 2,560 nozzles per color for a total of 30,720 nozzles. Superfine 4pl ink droplets and print resolutions of up to 2400 x 1200 dpi produce the delicate color gradation and the high-definition expression required by fine art applications and professional photographers.

SYSTEM CALIBRATION—SIMPLIFIED

Unlike the complex and time-consuming calibration normally required in professional settings, Canon offers a simplified process that enables easy recalibration back to the original, optimal factory settings across all the printers' media types.

12-Color

GRAPHIC ARTS PRINTERS

Uncompromised Creative Expression

	imagePROGRAF iP9100	imagePROGRAF iPF8100
MSRP*	\$15,995	\$6,295
Output Width	60" Wide	44" Wide
Number of Inks	12	12
Color Set	Cyan, Photo Cyan, Yellow, Magenta, Photo Magenta, Red, Green, Blue, Black, Matte Black, Gray, Photo Gray	Cyan, Photo Cyan, Yellow, Magenta, Photo Magenta, Red, Green, Blue, Black, Matte Black, Gray, Photo Gray
Ink Type	LUCIA Pigment Inks	LUCIA Pigment Inks
Ink Tank Size	330ml/700ml	330ml/700ml
Maximum Print Resolution	2400 x 1200 dpi	2400 x 1200 dpi
Total Number of Nozzles	30,720	30,720
Ink Droplet	Consistent 4pl	Consistent 4pl
Maximum Print Speed (1200 x 1200 dpi on Plain Paper)	343 ft. ² /hr. [†]	297 ft. ² /hr. [†]
Print Speed Best Quality Mode (2400 x 1200 dpi on Photo Gloss Paper)	58 ft. ² /hr. [†]	50 ft. ² /hr. [†]
Workflow/Software Solutions ✔ = included ○ = optional	<ul style="list-style-type: none"> ✔ Canon Printer Driver ✔ Print Plug-in for Photoshop® ✔ Print Plug-in for Digital Photo Professional ✔ Print Plug-in for Microsoft® Office[†] ✔ Digital Photo Front-Access ✔ Remote User Interface ✔ Media Configuration Tool ○ PosterArtist (PC only) ○ Third-Party RIPs 	<ul style="list-style-type: none"> ✔ Canon Printer Driver ✔ Print Plug-in for Photoshop ✔ Print Plug-in for Digital Photo Professional ✔ Print Plug-in for Microsoft Office[†] ✔ Digital Photo Front-Access ✔ Remote User Interface ✔ Media Configuration Tool ○ PosterArtist (PC only) ○ Third-Party RIPs
Special Features	<ul style="list-style-type: none"> • Built-in Printer Calibration • Borderless Printing • Sub Ink Tank System 	<ul style="list-style-type: none"> • Built-in Printer Calibration • Borderless Printing • Sub Ink Tank System
Printer Memory	640MB	384MB
Hard Drive	80GB	80GB
Network-Ready	Yes	Yes
Connectivity	<ul style="list-style-type: none"> ✔ USB 2.0, 10/100Base-T/TX ○ IEEE1394 (Firewire) 	<ul style="list-style-type: none"> ✔ USB 2.0, 10/100Base-T/TX ○ IEEE1394 (Firewire)
Operating System	Windows®: 2000/XP/Windows Vista® Macintosh®: OS 9/X	Windows: 2000/XP/Windows Vista Macintosh: OS 9/X

* As of May 1, 2009. Actual prices are set by dealers and may vary.

† OS: Windows XP SP2, CPU: Pentium 4 3.2GHz, RAM: 1GB, Application: Adobe Photoshop 7.0, Interface: USB 2.0 Hi-Speed, Data used: ISO/JIS-SCID No.5, Output image size: A0 (827mm x 1033.8mm); Measured by Canon Inc. Each print time does not include data transfer time. The print speed may vary depending on the data volume and size, PC, application, software, media type, and interface.

† Please visit www.usa.canon.com/download for availability.

12-Color

GRAPHIC ARTS PRINTERS

Uncompromised Creative Expression

	imagePROGRAF iPF6200	imagePROGRAF iPF6100	imagePROGRAF iPF5100
MSRP*	\$3,495	\$2,895	\$2,095
Output Width	24" Wide	24" Wide	17" Wide
Number of Inks	12	12	12
Color Set	Cyan, Photo Cyan, Yellow, Magenta, Photo Magenta, Red, Green, Blue, Black, Matte Black, Gray, Photo Gray	Cyan, Photo Cyan, Yellow, Magenta, Photo Magenta, Red, Green, Blue, Black, Matte Black, Gray, Photo Gray	Cyan, Photo Cyan, Yellow, Magenta, Photo Magenta, Red, Green, Blue, Black, Matte Black, Gray, Photo Gray
Ink Type	LUCIA Pigment Inks	LUCIA Pigment Inks	LUCIA Pigment Inks
Ink Tank Size**	130ml**	130ml**	130ml**
Maximum Print Resolution	2400 x 1200 dpi	2400 x 1200 dpi	2400 x 1200 dpi
Total Number of Nozzles	30,720	30,720	30,720
Ink Droplet	Consistent 4pl	Consistent 4pl	Consistent 4pl
Maximum Print Speed (1200 x 1200 dpi on Plain Paper)	258 ft. ² /hr. [†]	258 ft. ² /hr. [†]	212 ft. ² /hr. [†]
Print Speed Best Quality Mode (2400 x 1200 dpi on Photo Gloss Paper)	45 ft. ² /hr. [†]	45 ft. ² /hr. [†]	39 ft. ² /hr. [†]
Workflow/Software Solutions ✔ = included ○ = optional	<ul style="list-style-type: none"> ✔ EFI Colorproof eXpress Software RIP ✔ Canon Printer Driver ✔ Print Plug-in for Photoshop ✔ Print Plug-in for Digital Photo Professional ✔ Print Plug-in for Microsoft Office[†] ✔ PosterArtist Lite (PC only) ✔ Digital Photo Front-Access ✔ Remote User Interface ✔ Media Configuration Tool ○ PosterArtist (PC only) ○ Third-Party RIPs 	<ul style="list-style-type: none"> ✔ Canon Printer Driver ✔ Print Plug-in for Photoshop ✔ Print Plug-in for Digital Photo Professional ✔ Print Plug-in for Microsoft Office[†] ✔ Digital Photo Front-Access ✔ Remote User Interface ✔ Media Configuration Tool ○ PosterArtist (PC only) ○ Third-Party RIPs 	<ul style="list-style-type: none"> ✔ Canon Printer Driver ✔ Print Plug-in for Photoshop ✔ Print Plug-in for Digital Photo Professional ✔ Print Plug-in for Microsoft Office[†] ✔ Digital Photo Front-Access ✔ Remote User Interface ✔ Media Configuration Tool ○ PosterArtist (PC only) ○ Third-Party RIPs
Special Features	<ul style="list-style-type: none"> • EFI Colorproof eXpress Software RIP <ul style="list-style-type: none"> – Intuitive one-click spot color handling – True Adobe® PS Level 3 support – Manual and automatic nesting • 80GB Hard Drive 	<ul style="list-style-type: none"> • Built-in Printer Calibration • Ambient Light Adjustment • Borderless Printing 	<ul style="list-style-type: none"> • Built-in Printer Calibration • Ambient Light Adjustment • Borderless Printing
Printer Memory	384MB	384MB	192MB
Hard Drive	80GB	N/A	N/A
Network-Ready	Yes	Yes	Yes
Connectivity	✔ USB 2.0: 10/100Base-T/TX	✔ USB 2.0, 10/100Base-T/TX ○ IEEE1394 (Firewire)	✔ USB 2.0, 10/100Base-T/TX ○ IEEE1394 (Firewire)
Operating System	Windows: 2000/XP/ Windows Vista Macintosh: OS X	Windows: 2000/XP/ Windows Vista Macintosh: OS 9/X	Windows: 2000/XP/ Windows Vista Macintosh: OS 9/X

* As of May 1, 2009. Actual prices are set by dealers and may vary.

** The starter ink tanks initially packaged with the printer are not the same capacity as the replacement ink tanks specified here.

† OS: Windows XP SP2, CPU: Pentium 4 3.2GHz, RAM: 1GB, Application: Adobe Photoshop 7.0, Interface: USB 2.0 Hi-Speed, Data used: ISO/JIS-SCID No.5, Output image size: A2 (410mm x 512.5mm) for iPF5100, A1 (580mm x 724.9mm) for iPF6200 and iPF6100. Measured by Canon Inc. Each print time does not include data transfer time. The print speed may vary depending on the data volume and size, PC, application, software, media type, and interface.

† Please visit www.usa.canon.com/download for availability.

8-Color: Graphic Arts Production Printers

The imagePROGRAF S-Series production printing systems are Canon's fastest Graphic Arts large-format printers. Available in three sizes—the 24 iPF6000S, 44 iPF8000S, and the 60 iPF9000S—these production-grade print engines are up to 40% faster than any other imagePROGRAF Graphic Arts printer, making them ideal for professionals who need to increase the capacity, productivity, and versatility of their large-format printing services.

COMMERCIAL PRINT SERVICE PROVIDERS

- Produce point-of-sale displays, GIS maps, back-lit displays, and special events graphics.
- Take on bigger jobs. High-speed output—up to 403 sq. ft./hr.*—means producing more in less time.
- Get a competitive advantage—the Economy Color Mode reduces ink costs.
- These are also ideal for imposition proofing.

RETAIL QUICK PRINT CENTERS

- No need to make your customers wait—print a large 10 sq. ft. poster in under 3 minutes.*
- Borderless printing reduces trimming requirements.
- Expand your service options with this versatile system that prints on a wide variety of media.

IN-PLANT PRODUCTION CENTERS

- Fast throughput from click to print means you can meet tight deadlines.
- Network-ready, an 80GB hard drive, and a Remote User Interface with password-protected Mail Boxes mean your internal customers can submit jobs more easily.

Canon Innovations Inside

MAXIMUM PRODUCTIVITY

With high-speed throughput up to 403 sq. ft./hr.*, an 80GB hard drive, borderless printing, and other features that maximize productivity, these printers increase overall production capacity and reduce job turnaround time.

QUALITY AND CONTROL

With a built-in calibration function and other advanced quality control features, iPF S-Series printers are designed to deliver consistently superior results, without sacrificing quality.

LOW-COST OPERATION

The Economy Color Mode, low maintenance costs, and reduced power consumption requirements together help reduce the total cost of operation so print professionals can be more competitive in the marketplace.

RELIABLE, WORRY-FREE INK SYSTEMS

The large 330ml and 700ml ink tanks available for the iPF9000S and iPF8000S printers supply a sub-tank system so inks can be replenished on-the-fly without stopping printing for longer uninterrupted print runs. The 130ml ink tanks for the iPF6000S** printer can be replaced mid-print without corrupting the image or needing to resend the print file. All models include an ink-level detection system that helps ensure that ink is always available.

* iPF9000S, 1200 x 1200 dpi on plain paper

** The starter ink tanks initially packaged with the printer are not the same capacity as the replacement ink tanks specified here.

8-Color

GRAPHIC ARTS
PRODUCTION PRINTERS

For Professionals Who Need the *SPEED*

	imagePROGRAF iPF9000S	imagePROGRAF iPF8000S	imagePROGRAF iPF6000S
MSRP*	\$15,995	\$6,295	\$3,295
Output Width	60" Wide	44" Wide	24" wide
Number of Inks	8	8	8
Color Set	Cyan, Photo Cyan, Yellow, Magenta, Photo Magenta, Black, Matte Black, Gray	Cyan, Photo Cyan, Yellow, Magenta, Photo Magenta, Black, Matte Black, Gray	Cyan, Photo Cyan, Yellow, Magenta, Photo Magenta, Black, Matte Black, Gray
Ink Type	LUCIA Pigment Inks	LUCIA Pigment Inks	LUCIA Pigment Inks
Ink Tank Size	330ml and 700ml	330ml and 700ml	130ml**
Maximum Print Resolution	2400 x 1200 dpi	2400 x 1200 dpi	2400 x 1200 dpi
Total Number of Nozzles	30,720	30,720	30,720
Ink Droplet	Consistent 4pl	Consistent 4pl	Consistent 4pl
Maximum Print Speed (1200 x 1200 dpi on Plain Paper)	403 ft. ² /hr. [†]	350 ft. ² /hr. [†]	294 ft. ² /hr. [†]
Print Speed Best Quality Mode (2400 x 1200 dpi on Gloss Paper)	105 ft. ² /hr. [†]	90 ft. ² /hr. [†]	69 ft. ² /hr. [†]
Workflow/Software Solutions <input checked="" type="checkbox"/> = included <input type="checkbox"/> = optional	<input checked="" type="checkbox"/> Canon Printer Driver <input checked="" type="checkbox"/> Print Plug-in for Photoshop <input checked="" type="checkbox"/> Print Plug-in for Digital Photo Professional <input checked="" type="checkbox"/> Print Plug-in for Microsoft Office [†] <input checked="" type="checkbox"/> Digital Photo Front-Access <input checked="" type="checkbox"/> Remote User Interface <input checked="" type="checkbox"/> Media Configuration Tool <input type="checkbox"/> PosterArtist (PC only) <input type="checkbox"/> Third-Party RIPs	<input checked="" type="checkbox"/> Canon Printer Driver <input checked="" type="checkbox"/> Print Plug-in for Photoshop <input checked="" type="checkbox"/> Print Plug-in for Digital Photo Professional <input checked="" type="checkbox"/> Print Plug-in for Microsoft Office [†] <input checked="" type="checkbox"/> Digital Photo Front-Access <input checked="" type="checkbox"/> Remote User Interface <input checked="" type="checkbox"/> Media Configuration Tool <input type="checkbox"/> PosterArtist (PC only) <input type="checkbox"/> Third-Party RIPs	<input checked="" type="checkbox"/> Canon Printer Driver <input checked="" type="checkbox"/> Print Plug-in for Photoshop <input checked="" type="checkbox"/> Print Plug-in for Digital Photo Professional <input checked="" type="checkbox"/> Print Plug-in for Microsoft Office [†] <input checked="" type="checkbox"/> PosterArtist Lite (PC only) <input checked="" type="checkbox"/> Digital Photo Front-Access <input checked="" type="checkbox"/> Remote User Interface <input checked="" type="checkbox"/> Media Configuration Tool <input type="checkbox"/> PosterArtist (PC only) <input type="checkbox"/> Third-Party RIPs
Special Features	<ul style="list-style-type: none"> • Economy Color Mode • Sub Ink Tank System • Built-in Printer Calibration • Borderless Printing^{††} 	<ul style="list-style-type: none"> • Economy Color Mode • Sub Ink Tank System • Built-in Printer Calibration • Borderless Printing^{††} 	<ul style="list-style-type: none"> • PosterArtist Lite • Economy Color Mode • Built-in Printer Calibration • Borderless Printing
Printer Memory	640MB	384MB	256MB
Hard Drive	80GB	80GB	80GB
Network-Ready	Yes	Yes	Yes
Connectivity	<input checked="" type="checkbox"/> USB 2.0:10/100Base-T/TX <input type="checkbox"/> IEEE1394 (Firewire)	<input checked="" type="checkbox"/> USB 2.0:10/100Base-T/TX <input type="checkbox"/> IEEE1394 (Firewire)	<input checked="" type="checkbox"/> USB 2.0:10/100Base-T/TX
Operating System	Windows: 2000/XP/ Windows Vista Macintosh: OS 9/X	Windows: 2000/XP/ Windows Vista Macintosh: OS 9/X	Windows: 2000/XP/ Windows Vista Macintosh: OS X

* As of May 1, 2009. Actual prices are set by dealers and may vary.

** The starter ink tanks initially packaged with the printer are not the same capacity as the replacement ink tanks specified here.

† OS: Windows XP SP2, CPU: Pentium 4 3.2GHz, RAM: 1GB, Application: Adobe Photoshop 7.0, Interface: USB 2.0 Hi-Speed, Data used: ISO/JIS-SCID No.5, Output image size: A0 (827mm x 1033.8mm) for iPF9000S and iPF8000S, A1 (580mm x 724.9mm) for iPF6000S. Measured by Canon Inc. Each print time does not include data transfer time. The print speed may vary depending on the data volume and size, PC, application, software, media type, and interface.

† Please visit www.usa.canon.com/download for availability.

†† Up to 42.

5-Color: Reactive Ink Printers for Technical Documents and General Use Applications

Designed for both technical document printing as well as general purpose output applications, these highly versatile systems go from printing oversized office documents to intricate technical drawings to posters and back...effortlessly.

Canon's 5-color Reactive Ink printing systems are ideal for businesses, schools, architects, engineers, or anyone who wants to print spectacular, full-color presentations, signs, posters, CAD drawings, GIS maps, and other types of large-format output.

COMPUTER-AIDED DESIGN (CAD)

- Produce intricate drawings with accurate lines as thin as just 0.02mm thick.*
- Two Matte Black ink channels maximize output speed for text and line drawings.
- Printing support for AutoCAD®, HP-GL/2, and HP RTL Files

GEOGRAPHIC INFORMATION SYSTEMS (GIS)

- Print detailed maps and graphs with small fonts that are easy to read on colored backgrounds.
- High-resolution 2400 x 1200 dpi output means solid fills, smooth curves, and intricate details.

BUSINESS

- Assemble spreadsheets, pictures, and graphics onto one page and print them together.
- Make your own enlargements.

EDUCATION

- Create classroom materials and learning aids.
- Produce posters for special events, banners for pep rallies, and signs for fund-raisers.

Canon Innovations Inside

FIVE-COLOR DYE/PIGMENT REACTIVE INK TECHNOLOGY

Canon's Reactive Ink technology utilizes four highly colorfast dye inks—Cyan, Magenta, Yellow, and Black—plus two channels of pigment-based Matte Black. The inks are specially formulated to improve both durability and clarity of the image. The Matte Black ink is chemically engineered to react with the Cyan ink to prevent “bleeding” at the border between color and black output. This produces clearer text and sharper lines—especially when printing fine lines and small text fonts on colored backgrounds. The ink's chemistry also improves adhesion to the media so images are more durable than when printed with conventional inks.

TWO MATTE BLACK INK CHANNELS

Though these printers utilize five colors of ink, Canon has dedicated a sixth ink channel to Matte Black ink. This increases the rate at which most text and line drawings can be output.

LOW TOTAL COST OF OPERATION

Canon's imagePROGRAF printers are built for low-cost operation. The Economy Print Mode significantly reduces ink consumption while the long-life print-heads deliver maximum reliability to help keep maintenance costs down.

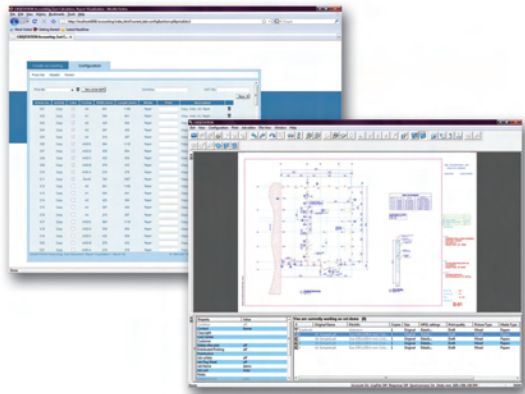
* Theoretical data based on data resolution.

More Options – More Productivity

Canon now offers even more hardware and software options to this line of printers, providing single-solution workflows to help maximize productivity, increase efficiency, and open new opportunities.

DUAL MEDIA ROLLS (IPF820 ONLY)

Equipped with dual media rolls, the iPF820 printer eliminates the cause of many bottlenecks in busy printing environments. It can automatically switch between different sizes and types of media or print on the same media to enable fast, consecutive printing of jobs submitted by multiple users.



CAD|STATION PS+

Available with the iPF820/810 PRO models, this True Adobe PostScript® color RIP with advanced job management and accounting functionality has a client/server architecture with the ability to set up an unlimited number of clients. CAD|STATION PS+ simplifies batch printing procedures, allows for faster job throughput and includes advanced accounting and job-cost tracking functionality.



HIGH-CAPACITY STACKER

Add an optional high-capacity 36" or 44" plain paper stacker for even greater efficiency. This stacker provides a sturdy flat surface to off-load plain paper prints. It also automatically stacks documents of mixed output sizes up to 300 sheets, thereby reducing—or even eliminating—operator handling.

HIGH-SPEED, HIGH-RESOLUTION LARGE-FORMAT SCANNING

Do you need to archive, reproduce, or distribute large-format documents and presentations from hard-copy originals? Add a compatible high-speed, high-quality large-format scanner to your imagePROGRAF printer to create a complete multifunction, scan-to-copy solution.



5-Color

REACTIVE INK PRINTERS

For Technical Documents and General Printing Applications

	imagePROGRAF iPF820/810	imagePROGRAF iPF820/810 PRO
MSRP*	\$7,495/\$5,795	\$9,495/\$7,795
Output Width	44" Wide	44" Wide
Number of Inks	5	5
Color Set	Dye: Cyan, Magenta, Yellow, Black, Pigment: Matte Black	Dye: Cyan, Magenta, Yellow, Black, Pigment: Matte Black
Ink Type	Dye/Pigment Reactive Ink	Dye/Pigment Reactive Ink
Ink Tank Size	330ml and 700ml	330ml and 700ml
Maximum Print Resolution	2400 x 1200 dpi	2400 x 1200 dpi
Total Number of Nozzles	15,360	15,360
Ink Droplet	Consistent 4pl	Consistent 4pl
Maximum Print Speed (1200 x 1200 dpi on Plain Paper)	688 ft. ² /hr. [†]	688 ft. ² /hr. [†]
Print Speed Best Quality Mode (2400 x 1200 dpi on Photo Gloss Paper)	89 ft. ² /hr. [†]	89 ft. ² /hr. [†]
Workflow/Software Solutions ✔ = included ○ = optional	<ul style="list-style-type: none"> ✔ Canon Printer Driver ✔ HDI Driver ✔ Print Plug-in for Microsoft Office[†] ✔ Digital Photo Front-Access ✔ Remote User Interface ✔ Media Configuration Tool ✔ Supports HP-GL/2, HP RTL Files ○ PosterArtist (PC only) ○ Third-Party RIPs 	<ul style="list-style-type: none"> ✔ CAD STATION PS+ ✔ HDI Driver ✔ Canon Printer Driver ✔ Print Plug-in for Microsoft Office[†] ✔ Digital Photo Front-Access ✔ Remote User Interface ✔ Media Configuration Tool ✔ Supports HP-GL/2, HP RTL Files ○ PosterArtist (PC only) ○ Third-Party RIPs
Special Features	<ul style="list-style-type: none"> • Economy Color Mode • Sub Ink Tank System • Built-in Printer Calibration • Independent Rotary Cutter • Dual Media Roll (820 model only) 	<ul style="list-style-type: none"> • CAD STATION PS+: a true Adobe PostScript Workflow Solution <ul style="list-style-type: none"> - Batch Printing and Nesting Capabilities - Job and Print Queue Management - Fully Integrated Account Tracking and Invoicing Functionality • Dual Media Roll (820 model only)
Printer Memory	384MB	384MB
Hard Drive	80GB	80GB
Network-Ready	Yes	Yes
Connectivity	<ul style="list-style-type: none"> ✔ USB 2.0:10/100Base-T/TX ○ IEEE1394 (Firewire) 	<ul style="list-style-type: none"> ✔ USB 2.0:10/100Base-T/TX ○ IEEE1394 (Firewire)
Operating System	Windows: 2000/XP/Server 2003/ Windows Vista Macintosh: OS X	Windows: 2000/XP/Server 2003/ Windows Vista Macintosh: OS X

* As of May 1, 2009. Actual prices are set by dealers and may vary.

† OS: Windows XP SP2, CPU: Pentium 4 3.2GHz, RAM: 1GB, Application: Adobe Photoshop 7.0, Interface: USB 2.0 Hi-Speed, Data used: ISO/JIS-SCID No.5, Output image size: A0 (827mm x 1033.8mm). Measured by Canon Inc. Each print time does not include data transfer time. The print speed may vary depending on the data volume and size, PC, application, software, media type, and interface.

‡ Please visit www.usa.canon.com/download for availability.

5-Color

REACTIVE INK PRINTERS

For Technical Documents and General Printing Applications

	imagePROGRAF iPF755/750	imagePROGRAF iPF710
MSRP*	\$4,995/\$4,495	\$3,495
Output Width	36" Wide	36" Wide
Number of Inks	6	6
Color Set	Dye: Cyan, Magenta, Yellow, Black, Pigment: Matte Black	Dye: Cyan, Magenta, Yellow, Black, Pigment: Matte Black
Ink Type	Dye/Pigment Reactive Ink	Dye/Pigment Reactive Ink
Ink Tank Size	130ml**	130ml**
Maximum Print Resolution	2400 x 1200 dpi	2400 x 1200 dpi
Total Number of Nozzles	15,360	15,360
Ink Droplet	Consistent 4pl	Consistent 4pl
Maximum Print Speed (1200 x 1200 dpi on Plain Paper)	779 ft. ² /hr. [■]	659 ft. ² /hr. [▲]
Print Speed Best Quality Mode (2400 x 1200 dpi on Gloss Paper)	79 ft. ² /hr.	79 ft. ² /hr. [▲]
Workflow/Software Solutions ✔ = included ○ = optional	<ul style="list-style-type: none"> ✔ Canon Printer Driver ✔ HDI Driver ✔ Digital Photo Front-Access ✔ Print Plug-in for Microsoft Office[†] ✔ Remote User Interface ✔ Media Configuration Tool ✔ Supports HP-GL/2, HP RTL Files ✔ PosterArtist Lite ○ PosterArtist (PC only) ○ Third-Party RIPs 	<ul style="list-style-type: none"> ✔ Canon Printer Driver ✔ HDI Driver ✔ Digital Photo Front-Access ✔ Print Plug-in for Microsoft Office[†] ✔ Remote User Interface ✔ Media Configuration Tool ✔ Supports HP-GL/2, HP RTL Files ○ PosterArtist (PC only) ○ Third-Party RIPs
Special Features	<ul style="list-style-type: none"> • Sub Ink Tank System • Top-loading Roll Feed • Gigabit Ethernet Support • New Operation Panel 	<ul style="list-style-type: none"> • Minimum line weight 0.02mm • Line Accuracy +/- 0.1% or less • Two Matte Black Ink Channels • Economy Print Mode • Borderless Printing
Printer Memory	256MB	256MB
Hard Drive	80GB (iPF755 only)	N/A
Network-Ready	Yes	Yes
Connectivity	✔ USB 2.0:10/100/1000 Base-T/TX	✔ USB 2.0:10/100 Base-T/TX ○ IEEE1394 (Firewire)
Operating System	<p>Windows: 32-bit 2000/XP/Server 2003/ Windows Vista/Server 2008</p> <p>Windows: 64-bit XP/Server 2003/Windows Vista/Server 2008</p> <p>Macintosh: OS X CUPS 32/64 bit^{††} (10.3.9-10.5.x)</p>	<p>Windows: 2000/XP/Server 2003/ Windows Vista</p> <p>Macintosh: OS 9/X (PowerPC or Intel[®])</p>

* As of May 1, 2009. Actual prices are set by dealers and may vary.

** The starter ink tanks initially packaged with the printer are not the same capacity as the replacement ink tanks specified here.

▲ OS: Windows XP SP2, CPU: Pentium 4 3.2GHz, RAM: 1GB, Application: Adobe Photoshop 7.0, Interface: USB 2.0 Hi-Speed, Data used: ISO/ JIS-SCID No.5, Output image size: A0 (827mm x 1033.8mm). Measured by Canon Inc. Each print time does not include data transfer time. The print speed may vary depending on the data volume and size, PC, application, software, media type, and interface.

† Please visit www.usa.canon.com/download for availability

†† 64 bit supported for 10.5 or later.

■ When printing in fast mode on plain paper. Includes paper-cutting time.

5-Color

REACTIVE INK PRINTERS

For Technical Documents and General Printing Applications

	imagePROGRAF iPF655/650	imagePROGRAF iPF610	imagePROGRAF iPF510
MSRP*	\$3,195/\$2,495	\$2,545	\$1,595
Output Width	24" Wide	24" Wide	17" Wide
Number of Ink Tanks	6	6	6
Color Set	Dye: Cyan, Magenta, Yellow, Black Pigment: Matte Black	Dye: Cyan, Magenta, Yellow, Black Pigment: Matte Black	Dye: Cyan, Magenta, Yellow, Black Pigment: Matte Black
Ink Type	Dye/Pigment Reactive Ink	Dye/Pigment Reactive Ink	Dye/Pigment Reactive Ink
Ink Tank Size**	130ml**	130ml**	130ml**
Maximum Print Resolution	2400 x 1200 dpi	2400 x 1200 dpi	2400 x 1200 dpi
Total Number of Nozzles	15,360	15,360	15,360
Ink Droplet	Consistent 4pl	Consistent 4pl	Consistent 4pl
Maximum Print Speed (1200 x 1200 dpi on Plain Paper)	653 ft. ² /hr. [■]	609 ft. ² /hr. [▲]	415 ft. ² /hr. ^{▲▲}
Print Speed Best Quality Mode (2400 x 1200 dpi on Gloss Paper)	73 ft. ² /hr.	72 ft. ² /hr. [▲]	60 ft. ² /hr. ^{▲▲}
Workflow/Software Solutions ✔ = included ○ = optional	<ul style="list-style-type: none"> ✔ Canon Printer Driver ✔ HDI Driver ✔ Print Plug-in for Microsoft Office[†] ✔ Digital Photo Front-Access ✔ Remote User Interface ✔ Media Configuration Tool ✔ Supports HP-GL/2, HP RTL ✔ PosterArtist Lite ○ PosterArtist (PC only) ○ Third-Party RIPs 	<ul style="list-style-type: none"> ✔ Canon Printer Driver ✔ HDI Driver ✔ Print Plug-in for Microsoft Office[†] ✔ Digital Photo Front-Access ✔ Remote User Interface ✔ Media Configuration Tool ✔ Supports HP-GL/2, HP RTL ○ PosterArtist (PC only) ○ Third-Party RIPs 	<ul style="list-style-type: none"> ✔ Canon Printer Driver ✔ HDI Driver ✔ Print Plug-in for Microsoft Office[†] ✔ Digital Photo Front-Access ✔ Remote User Interface ✔ Media Configuration Tool ✔ Supports HP-GL/2, HP RTL ✔ PosterArtist Lite ○ PosterArtist (PC only) ○ Third-Party RIPs
Special Features	<ul style="list-style-type: none"> • Sub Ink Tank System • Top-loading Roll Feed • Gigabit Ethernet Support • New Operation Panel 	<ul style="list-style-type: none"> • Free-Layout Function • Borderless Printing • Minimum Line Weight 0.02mm • Line Accuracy +/- 0.1% • Cassette Tray 	<ul style="list-style-type: none"> • Desktop Printer • Free-Layout Function • Borderless Printing • Minimum Line Weight 0.02mm • Line Accuracy +/- 0.1%
Printer Memory	256MB	256MB	128MB
Hard Drive	80GB (iPF655 only)	N/A	N/A
Network-Ready	Yes	Yes	Yes
Connectivity	✔ USB 2.0:10/100/1000 Base-T/TX	✔ USB 2.0:10/100 Base-T/TX ○ IEEE1394 (Firewire)	✔ USB 2.0:10/100 Base-T/TX ○ IEEE1394 (Firewire)
Operating System	Windows: 32-bit 2000/XP/Server 2003/Windows Vista/Server 2008 Windows: 64-bit XP/Server 2003/Windows Vista/Server 2008 Macintosh: OS X CUPS 32/64 bit ^{††} (10.3.9-10.5.x)	Windows: 2000/XP/Server 2003/Windows Vista Macintosh: OS 9/X	Windows: 2000/XP/Server 2003/Windows Vista Macintosh: OS 9/X

* As of May 1, 2009. Actual prices are set by dealers and may vary.

** The starter ink tanks initially packaged with the printer are not the same capacity as the replacement ink tanks specified here.

▲ OS: Windows XP SP2, CPU: Pentium 4 3.2GHz, RAM: 1GB, Application: Adobe Photoshop 7.0, Interface: USB 2.0 Hi-Speed, Data used: ISO/JIS-SCID No.5, Output image size: A1 (580mm x 724.9mm) for iPF610 and iPF605, A2 (410mm x 512.5mm) for iPF500. Measured by Canon Inc. Each print time does not include data transfer time. The print speed may vary depending on the data volume and size, PC, application, software, media type, and interface.

▲▲ OS: Windows XP SP2, CPU: Pentium 4 3.2GHz, RAM: 1GB, Application: Adobe Photoshop 7.0, Interface: USB 2.0 Hi-Speed, Data used: ISO/JIS-SCID No.5, Output image size: A1 (580mm x 724.9mm) for iPF610 and iPF605, A2 (410mm x 512.5mm) for iPF510 using optional Roll Feed. Measured by Canon Inc. Each print time does not include data transfer time. The print speed may vary depending on the data volume and size, PC, application, software, media type, and interface.

[†] Please visit www.usa.canon.com/download for availability

^{††} 64 bit supported for 10.5 or later

■ When printing in fast mode on plain paper. Includes paper-cutting time

PosterArtist: Canon's Easy-to-Use Poster Creation Software

PosterArtist is an optional PC software package that makes it easy to create, customize, and print posters, banners, and signs. No graphic design experience is needed!

Just follow the four on-screen steps to select from over 200 customizable templates, professionally designed for retail, food and beverage, education, business, sports, celebrations, and other categories. PosterArtist also includes over 1,500 print-ready, royalty-free images, and clip-art that you can use. Or, if you prefer, you can import your own images such as company logos and digital camera photos!

For those with more demanding poster creation needs, PosterArtist also includes enhanced features such as an Auto Design function, support for Variable Data Printing, and even an Ambient Light Adjustment feature that assists in compensating for perceived color changes in various lighting environments!



Created in PosterArtist 2008



Created in PosterArtist 2008

Some imagePROGRAF printers come equipped with PosterArtist Lite to help beginners get started designing and printing their own posters. PosterArtist Lite is only available with specific imagePROGRAF printer bundles; it's not sold separately.

Download a trial version today.
For more information, please go to
www.usa.canon.com/posterartist.

PosterArtist











Alliance Partners

Canon's Alliance Program for large-format imagePROGRAF products was created to identify, develop, and market software solutions that not only add value to Canon's products, but also address customer and industry-specific needs in the marketplace. A Canon Alliance Partner is a company that has applied to be in the program and was approved by Canon. The Alliance Program provides a process in which the partner can conduct compatibility testing with the products in our imagePROGRAF line, ensuring that the product is compatible and the company's software solution enhances the value of the imagePROGRAF printer. Although we are highlighting the members of the Alliance Partner Program, there are a number of other vendors with customized solutions for the imagePROGRAF line. Please check the company's Web site for more detailed compatibility information.

With a full line of Canon large-format printers designed to be incorporated into a variety of market segments, customers are assured

the best software to suit their needs. These software solutions can be integrated into a range of market segments, such as the Proofing/Prepress, Photographic, CAD/GIS, Poster/Signage, and Scan/Copy to address customer-specific needs. Cost-tracking solutions are also available for those who would like to monitor specific expenses associated with making production pieces by providing detailed reports of the information. These software RIPs will add functionality to the imagePROGRAF devices that are not available in the native print driver. For example, they will accept a broader range of file formats and add features such as tiling, queue management, the ability to create ICC profiles, and ink tracking capabilities. With this added functionality, the imagePROGRAF printer becomes a complete workflow solution.

Canon's imagePROGRAF printers are commonly used for specific targeted applications in the following markets. The partners selected to work with Canon are leaders in some or all of the markets shown in the chart below:

	CAD/GIS	Photography	Proofing/ Prepress	Poster/ Signage	Scan/Copy	Cost- Tracking
			•			
		•	•	•		
		•	•	•		
	•	•	•	•		
	•				•	•
	•				•	•
	•	•	•	•	•	
	•	•			•	•
						•
	•	•	•	•		

For the most current listing of imagePROGRAF Alliance Partners, please visit www.usa.canon.com/imageprograf and click on the Alliance Partner Web banner.

Only with Canon Media

Canon media delivers consistently superior image quality and product performance. Rigorous testing ensures compatibility with imagePROGRAF printers in order to provide the best image quality possible.

Canon media can meet your needs. Drafting designs, producing point-of-purchase displays, and creating photographic and fine art reproductions can all be accomplished utilizing Canon imagePROGRAF printers and media.

The Right Media for the Right Job

PHOTOGRAPHIC/GLOSSY PAPER

High-end photography and portraits demand excellent photographic paper, and Canon offers a wide variety to meet these printing needs. Accurate, clear reproduction of digital images is a breeze with Canon photographic and glossy media options.

FINE ART MEDIA

Special artwork deserves special media. Paintings and digital art superbly reproduce on Canon Fine Art Media. Available in canvas, velvet, photo rag, and water-resistant styles, Canon Media meets the challenge of fine art printing.

PROOFING PAPERS

Accuracy and clarity are available at each stage of the design process with Canon proofing papers. Printers, marketers, and advertisers can create high-quality proofs that help correct errors and enhance artwork before printing.

SIGN/BANNER/DISPLAY MEDIA

Eye-catching signs, bulletins, and announcements are easy to create with Canon large-format printers. To suit every application, our sign and banner media are tear-resistant and offer a variety of special features, such as adhesive backing and vinyl coating.

BOND PAPER/CAD/GIS

Blueprints, maps, schedules, and sketches are ideally rendered with Canon large-format printers. These media are ideal for engineers and architects as well as CAD and GIS applications. For everyday use and draft printing, Canon has a wide variety of durable, inexpensive coated paper.

For more information on Canon Media, please visit the Canon Consumables Web site at: www.usa.canon.com/consumables/media.



Want to learn more? Got a big idea for using
Canon imagePROGRAF Large-Format Printers?
visit www.reproproducts.com



CAD Software ♦ Imaging Solutions ♦ Document Management

Corporate Office & Training Facility
4485 Atlanta Road, Smyrna, GA 30080
Phone 770-434-3050
www.reproproducts.com

As an ENERGY STAR® Partner, Canon U.S.A., Inc. has determined that these products meet the ENERGY STAR guidelines for energy efficiency. ENERGY STAR and the ENERGY STAR mark are registered U.S. marks. Adobe, Photoshop, and PostScript are registered trademarks of Adobe Systems Incorporated in the United States and/or other countries. Microsoft, Windows, and Windows Vista are registered trademarks of Microsoft Corporation in the United States and/or other countries. Macintosh is a trademark of Apple Inc. Intel and Pentium are trademarks or registered trademarks of Intel Corporation or its subsidiaries in the United States and/or other countries. CANON and IMAGEPROGRAF are registered trademarks and LUCIA is a trademark of Canon Inc. in the United States and may also be registered trademarks or trademarks in other countries. IMAGEANYWARE is a trademark of Canon. All other referenced product names and marks are trademarks of their respective owners and are hereby acknowledged. Specifications and availability subject to change without notice. For a full listing of specifications, see product brochures.
All output images are simulated.
©2009 Canon U.S.A., Inc. All rights reserved.

0409R-iPFLL-PDF-TM

Canon
*image*ANYWARE

1-800-OK-CANON
www.usa.canon.com

Canon U.S.A., Inc.
One Canon Plaza
Lake Success, NY 11042

